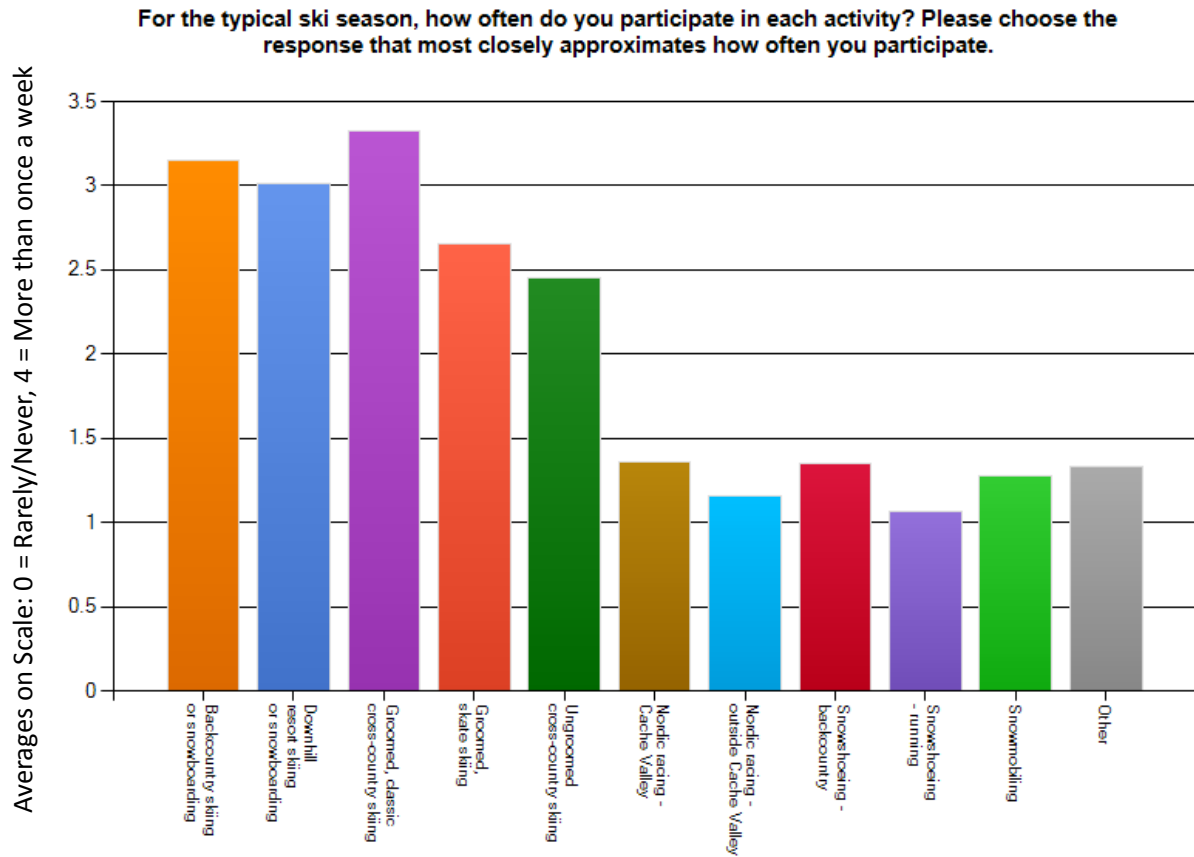


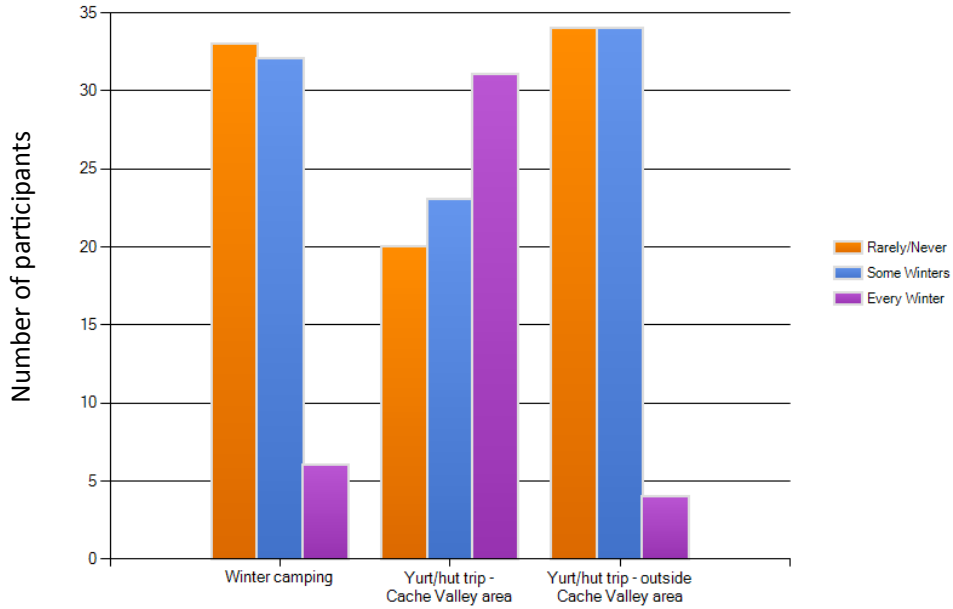
Participation



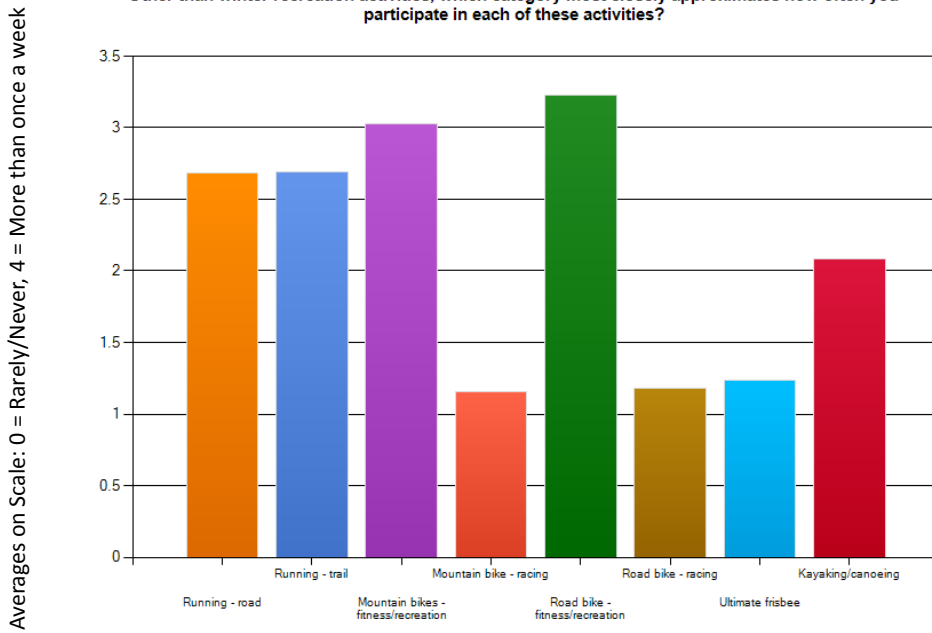
- Survey Responses: 75
- Backcountry: 60
- Classic groomed: 70
- Classic skate: 42
- All three: 33

More participation

How often do you participate in any of these winter recreation activities in the typical ski season?

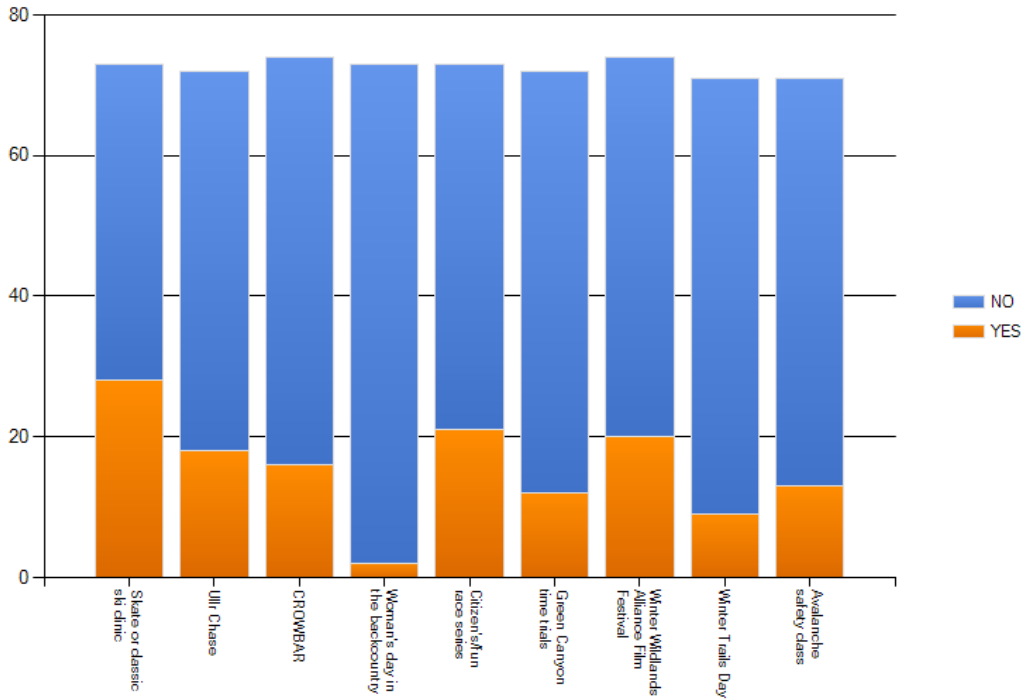


Other than winter recreation activities, which category most closely approximates how often you participate in each of these activities?

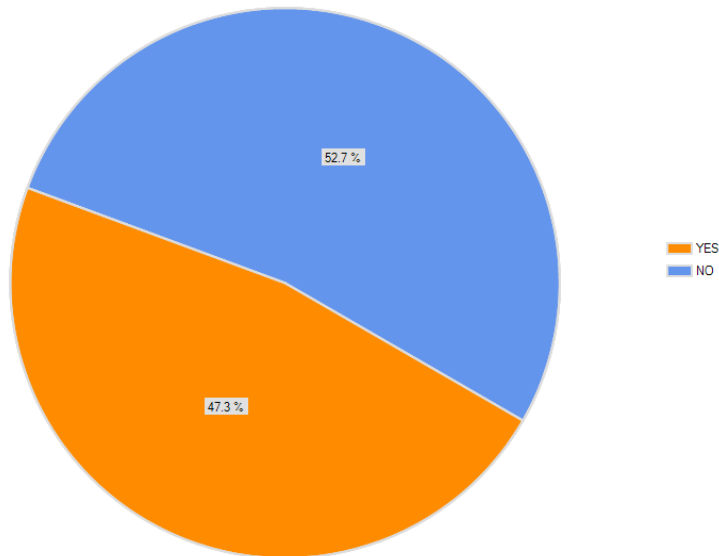


Nordic United Participation

Have you participated in any of the following NORDIC UNITED activities, this year or in past years?

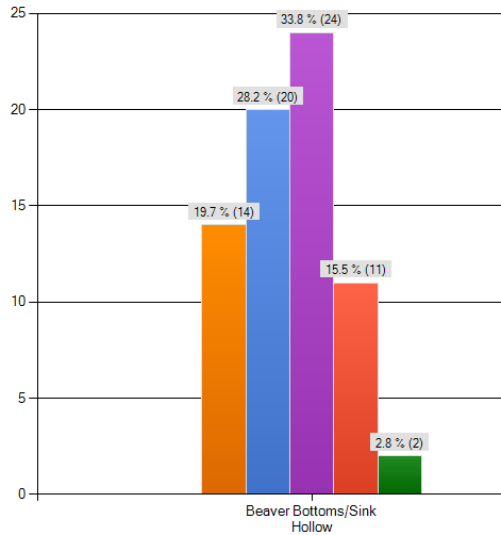


Have you ever volunteered with Nordic United?

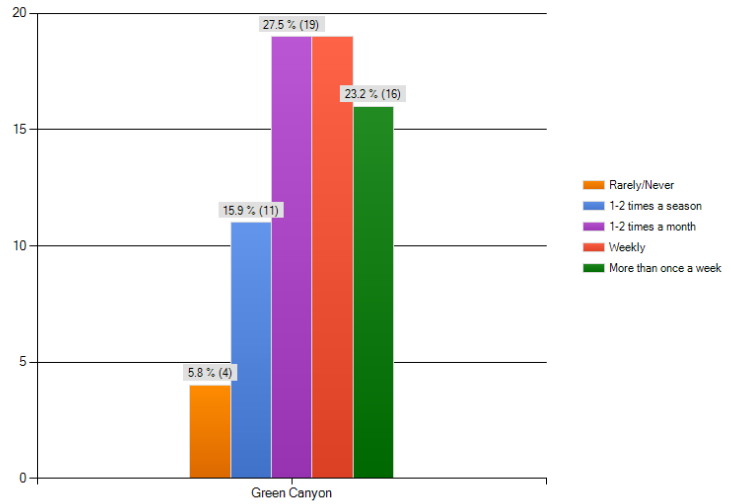


Groomed Areas

In the typical ski season, how often do you ski groomed trails at BEAVER BOTTOMS/SINK HOLLOW?



In the typical ski season, how often do you ski groomed trails at GREEN CANYON?



Like @ BB	Count
terrain/trails/hills	22
grooming quality	15
beautiful/natural setting	12
close to Beav	11
air quality	9
dogs allowed	5
no snowmobiles	4
snow consistency	4
kid friendly	3
not crowded	3
public land	1

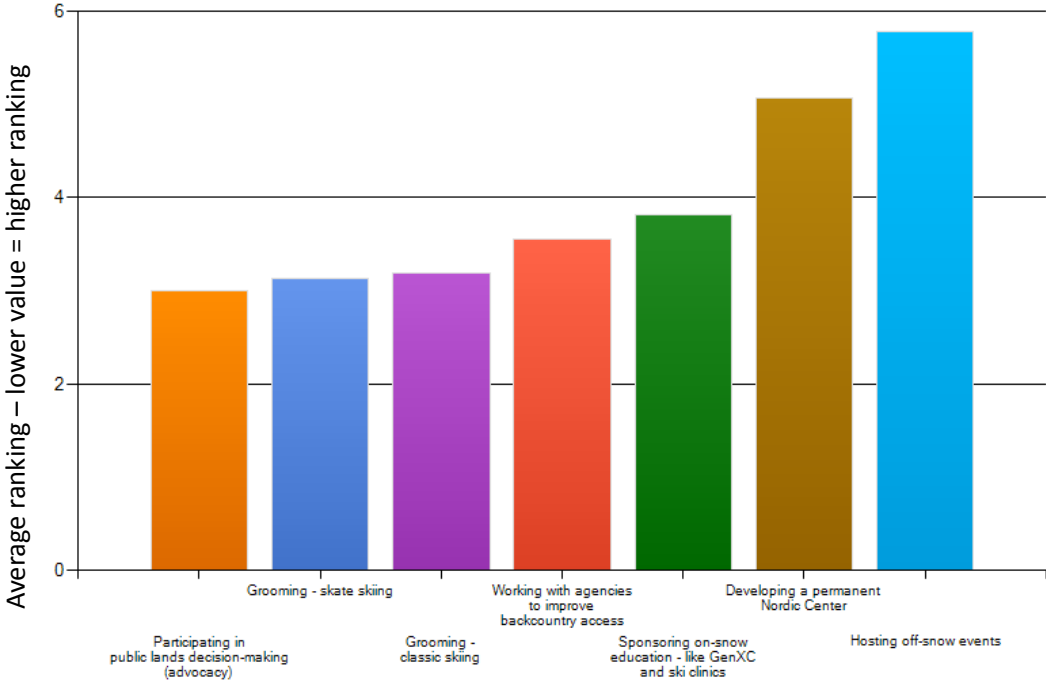
Dislike @ BB	Count
Snowmobiles/parking	32
Travel distance	15
Grooming quality/frequency/season length	10
Terrain/too short/circular	8
Grooming schedule/report	7
Road proximity	2
Dogs/dog crap	2
Other	4

Like @ Green Canyon
close to home
can ski with dogs
groomed
no snowmobiles

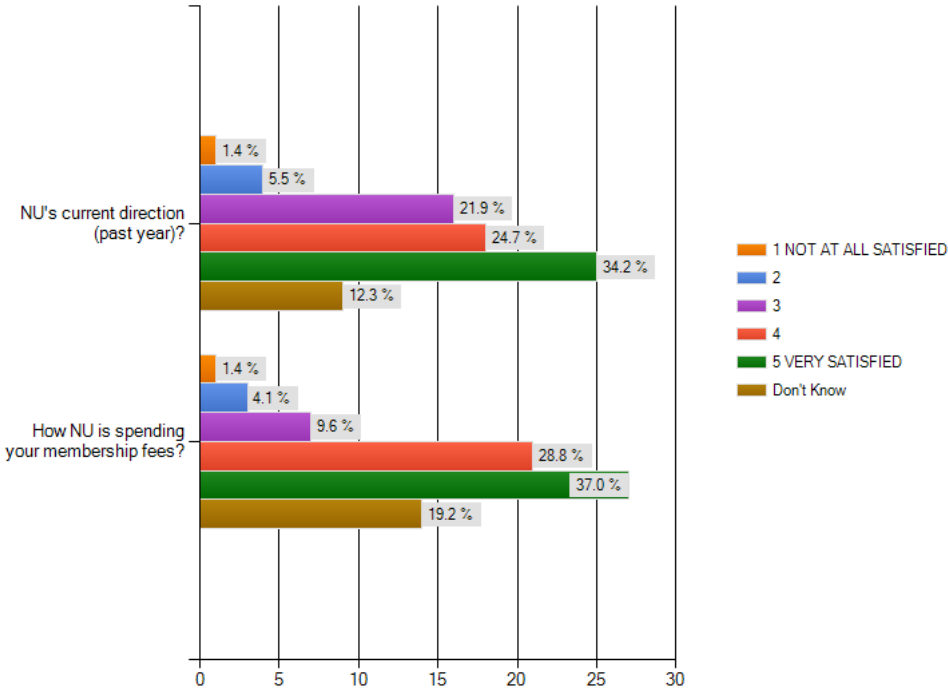
Dislike @ Green Canyon
Dog turds
Dogs
Divots - walkers, horses, dogs, bikes, etc.
Terrain (up all they way, then down all the way)

NU Mission

Of the same goals listed in Question 1 above, please RANK each goal in order of greatest importance to you, from 1 to 7. (1=MOST important, 7=LEAST important).

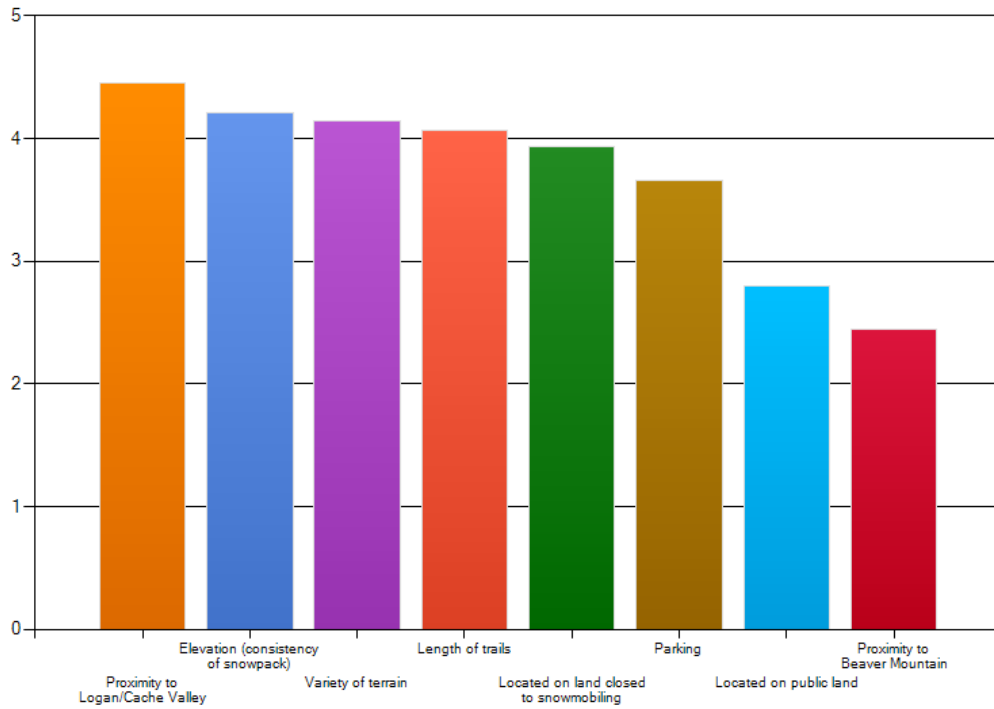


How satisfied are you with:

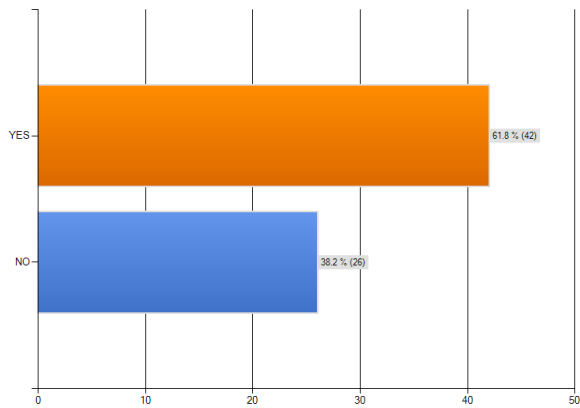


Nordic Center

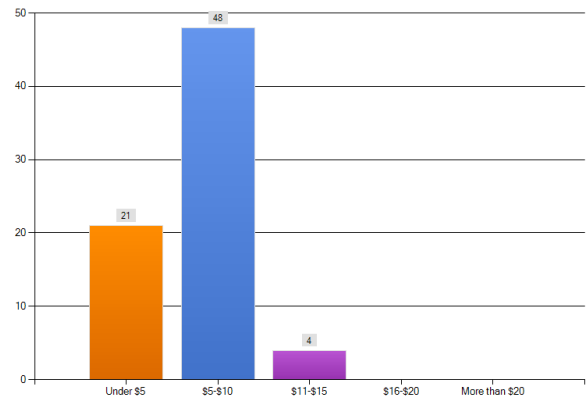
If NU were to pursue a permanent Nordic Center, how important are the following to you?



Have you skied groomed Nordic areas that required a fee to use the trails?

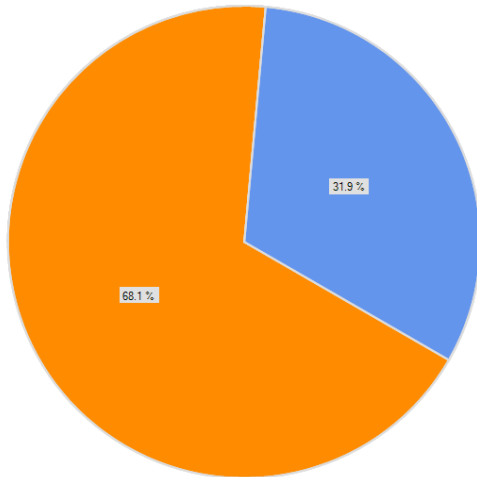


What is the most you would be willing to pay for use of groomed skiing at a Nordic Center in Cache Valley, if it were available and a fee was charged? (Per day use.)

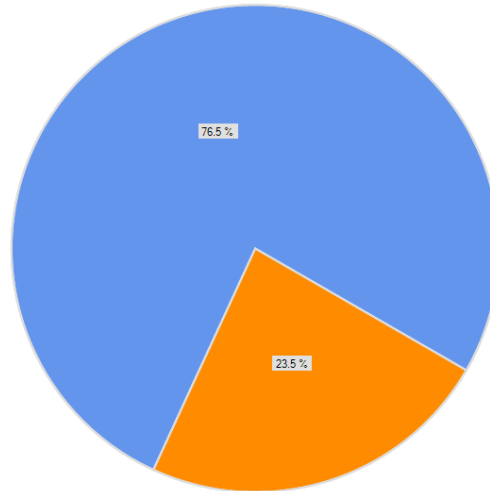


Background

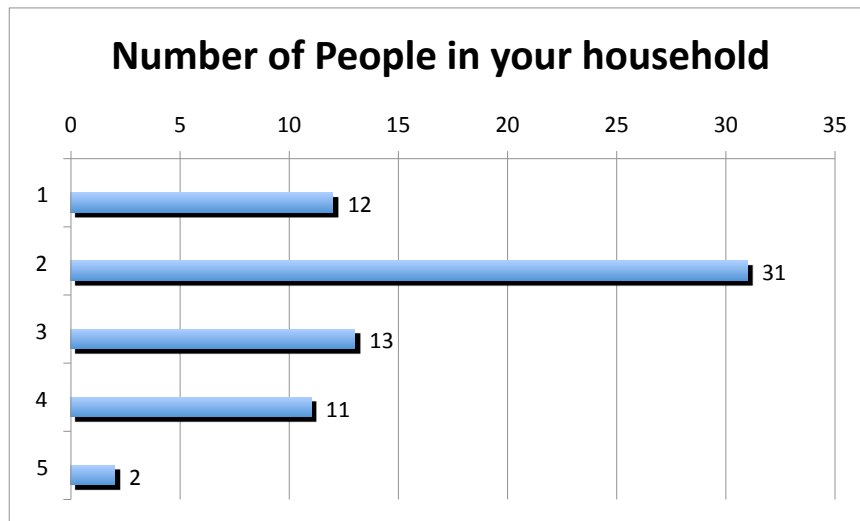
Have you or other members of your household had an annual ski pass at Bear Mountain Ski Resort within the last 3 years?



Do you plan on moving away from Cache Valley in the next 1-3 years?



Yes
No



- Length of residence: Ave 14 years, Range 1-60
- 9 out of 10 households all members participate in winter activities.
- 11 out of 75 had children in GenXC